

## SECONDARY SECURITY GLAZING

### DIMENSIONS (mm)

Bespoke to project requirement

### WEIGHT

Bespoke to project requirement

### RESISTANCE

BS 5051 G2/S86

EN 1522 up to FB6

EN 1063 up to BR6

### CONSTRUCTION

The framework and trims can be high-quality satin polished stainless steel or steel with powder coat finish to match decoration, as required.

# DATASHEET

## SECONDARY SECURITY GLAZING

Secondary Security Glazing provides bullet resistance, protection from physical attack, enhanced burglary resistance and fit behind existing external windows, hence avoiding drawing attention to secure areas. They are fitted to any area of a building that requires enhanced levels of protection. Typical applications include historic buildings, banks and listed buildings.

### MAIN FEATURES

- The security level of the entire secure area should align with the level of risk
- Available in manual attack and bullet resistance
- Can be installed into a window reveal or an independent frame
- Does not disturb existing external glazing, and is designed to be unobtrusive, to avoid drawing attention to high security areas within a building

### OPTIONAL

- Tinted obscure panels
- Optional finishes to suit
- Safetell can provide additional bullet and attack resistant doors, walling, transfer hatches, vision panels and other associated products to provide a completely secure area

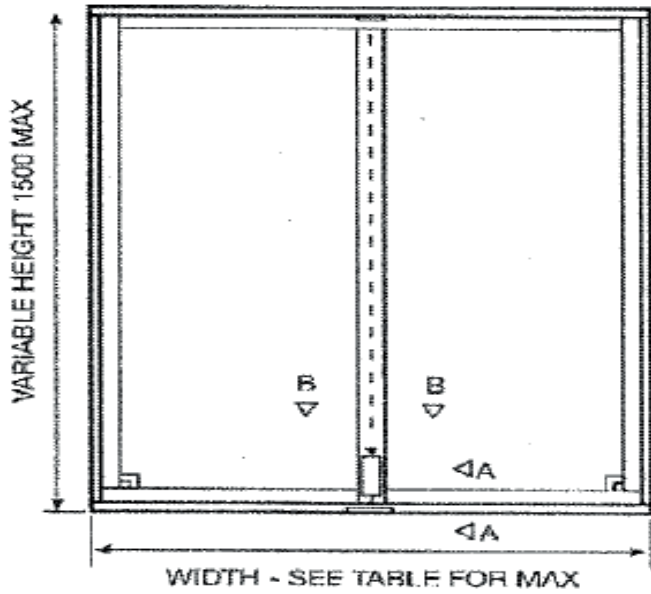


SERVICE &  
MAINTENANCE  
AVAILABLE

**+44 (0) 1322 223 233**

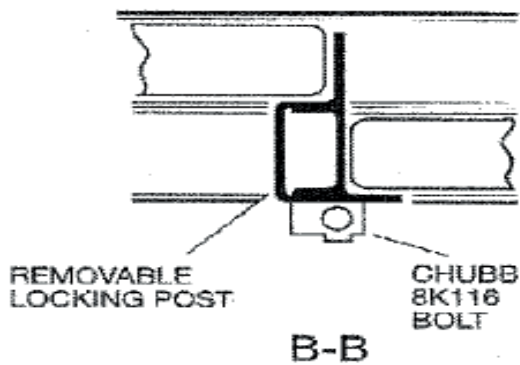
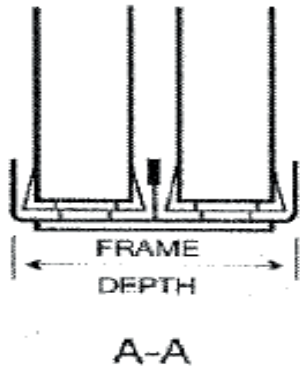
[sales@safetell.co.uk](mailto:sales@safetell.co.uk) [safetell.co.uk](http://safetell.co.uk)

# TECHNICAL DRAWINGS



GLAZING	FRAME DEPTH	MAX WIDTH FOR 1500 HEIGHT
13.5mm	44mm	2200mm
36mm	98mm	1600mm
42mm	110mm	1300mm

GLAZING	WEIGHT KG/M <sup>2</sup>
13.5mm	30
36mm	84
42mm	100



WE ARE FULLY ACCREDITED



+44 (0) 1322 223 233

sales@safetell.co.uk safetell.co.uk

