



Safetell

SAFETY SECURITY PROTECTION

Secondary Security Windows



Secondary Security Windows

Introduction

Safetell Secondary Security Windows provide bullet resistance, protection from physical attack, enhanced burglary resistance, and are fitted behind existing external windows to protect higher risk areas in buildings from attack.

The product does not disturb existing external glazing, and is designed to be unobtrusive to avoid drawing attention to high security areas within a building.

Typically used in cash offices, and retro-fitted in conversions of areas of a building to high security, these windows are to be kept closed at all times of risk. Occasional cleaning is achievable by removal of full height lockable bar to slide the glazing sections open.

Security Levels

Three security levels of the product are available:

- 13.5mm laminated security glass to offer resistance against physical attack with hammers, iron bars and other heavy objects
- 36mm laminated security glass (firearm resistant) designed to offer protection up to and including G1 level of BS5051, Part 1 (1988) and many common forms of shotgun attack
- 42mm laminated security glass (firearm resistant) designed to offer protection to G2 / S86 levels of BS5051, Part 1 (1988)

The security level of the entire secure area should align with the level of risk. Safetell can provide additional bullet and attack resistant doors, walling, transfer hatches, vision panels and other associated products to provide a complete secure area solution.

Options

- Tinted, obscure panels
- Fixed glazed panels

Finish

The framework and trims can be high quality satin polished stainless steel or steel with powder coat finish to match decoration, as required.

Operation

The glazing sections move on roller bearing tracks within deep channels, and are secured in the closed position by a full height locking bar with Chubb 8K 116 bolt. The panels are therefore always secured top and bottom without the need for staff to stretch or access the top of the window.

Sizes & Weights

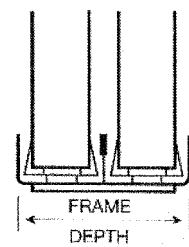
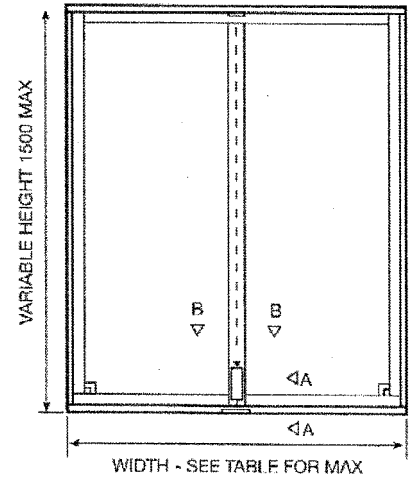
Each window is designed to suit existing window openings up to a maximum sliding sash height of 1500mm; windows over this height can incorporate a transom with fixed pane of security glass.

Configuration of units and maximum width of sliding sashes vary with height and thickness of glass (see Table 1).

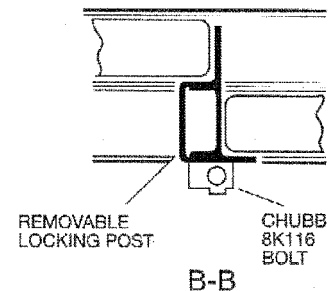
Installation

A solid level sill base is required to carry the weight of the glass, additional sill in-fills may be incorporated in the existing space to accommodate the Secondary Security Window if necessary.

Safetell provide nationwide installation and repair.



A-A



B-B

Table 1

Dimensions

Glazing	Frame Depth	Max Width For 1500 Height
13.5mm	44mm	2200mm
36mm	98mm	1600mm
42mm	110mm	1300mm

Table 2

Glazing	Weight Kg/m ²
13.5mm	30
36mm	84
42mm	100

Tel: +44 (0) 1322 22 32 33

Email: sales@safetell.co.uk Web: www.safetell.co.uk

Safetell, 46 Fawkes Avenue, Dartford, Kent DA1 1JQ

VER: 01/04/2015



Safetell

SAFETY SECURITY PROTECTION